

# 15 mg CBD 15 mg CBG Peach

Sample ID: 2103KCA0368.0890

Cultivar: N/A

Matrix: Ingestible

Type: Soft Chew

Sample Size:

Received: 03/11/2021

Completed: 03/16/2021

Batch#: 250

Client

ž Ÿ-nL~) , Ÿ-~>s-ž L} ...



## Summary

Test

Cannabinoids

Date Tested

03/16/2021

Result

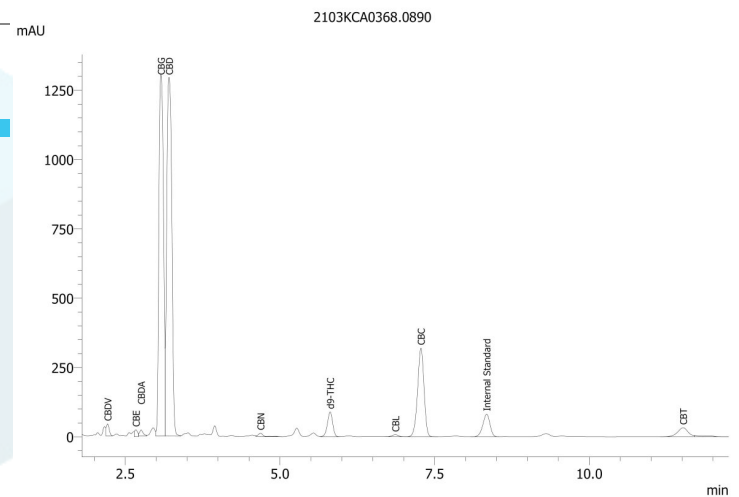
Complete

## Cannabinoids by HPLC-PDA

Complete

0.01025%	0.32909%	0.66511%	NT Not Tested	Not Tested
Total THC	Total CBD	Total Cannabinoids	Moisture Content	Foreign Matter

Analyte	LOD %	LOQ %	Result %	Result mg/unit
CBC	0.00009	0.00028	0.03970	2.0312
CBCA	0.00018	0.00054	ND	ND
CBCV	0.00006	0.00018	ND	ND
CBD	0.00008	0.00024	0.32767	16.7646
CBDA	0.00004	0.00013	0.00162	0.0829
CBDV	0.00006	0.00018	0.00275	0.1407
CBDVA	0.00002	0.00006	ND	ND
CBG	0.00006	0.00017	0.28153	14.4040
CBGA	0.00005	0.00015	ND	ND
CBL	0.00011	0.00033	0.00088	0.0450
CBLA	0.00012	0.00037	ND	ND
CBN	0.00006	0.00017	0.00071	0.0363
CBNA	0.00006	0.00018	ND	ND
Δ8-THC	0.00010	0.00031	ND	ND
Δ9-THC	0.00008	0.00023	0.01025	0.5244
THCA	0.00008	0.00025	ND	ND
THCV	0.00007	0.00021	ND	ND
THCVA	0.00006	0.00019	ND	ND
<b>Total THC</b>		<b>0.01025</b>	<b>0.52440</b>	
<b>Total CBD</b>		<b>0.32909</b>	<b>16.83730</b>	
<b>Total</b>		<b>0.66511</b>	<b>34.0292</b>	



Total THC = THCA \* 0.877 + Δ9-THC  
Total CBD = CBDA \* 0.877 + CBD  
LOD = Limit of Detection  
LOQ = Limit of Quantitation  
ND = None Detected

For plant material, the reported result is based on a sample weight with the applicable moisture content for that sample.



*Wes Rogers*

Wes Rogers  
Principal Scientist  
03/16/2021



ISO/IEC 17025:2017 Accredited  
Accreditation #108651

This product or substance has been tested by KCA Laboratories using validated testing methodologies and a quality system. Values reported relate only to the product or substance tested. KCA Laboratories makes no claims as to the efficacy, safety or other risks associated with any detected or non-detected amounts of any substances reported herein. This Certificate of Analysis shall not be reproduced except in full, without the written approval of KCA Laboratories.